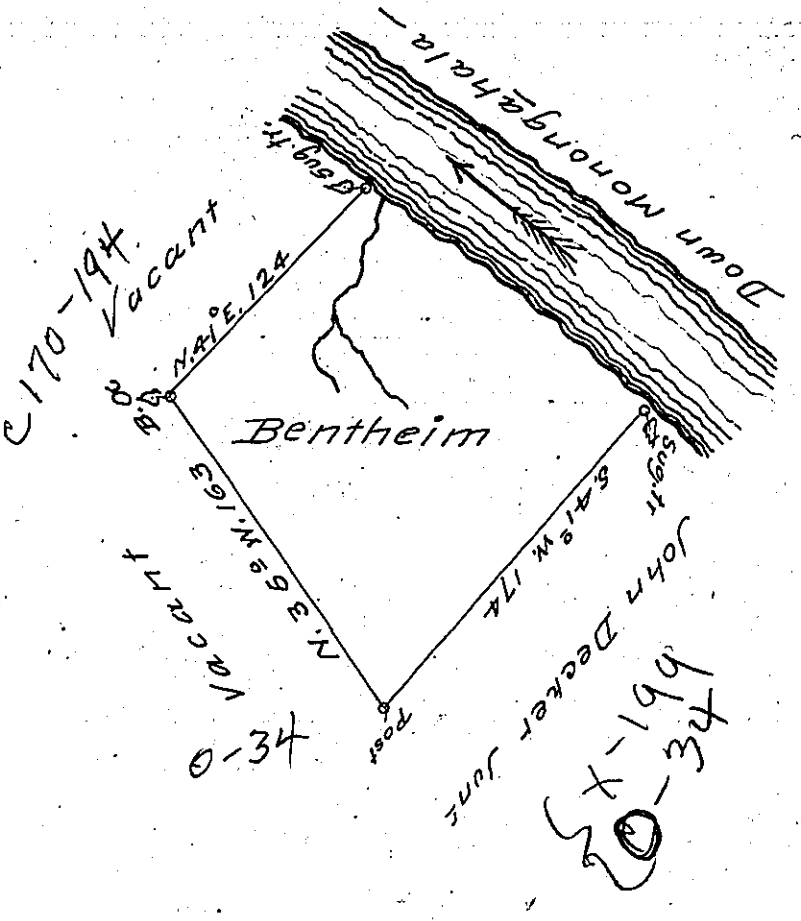


Course: up Monongahela—  
Beg. at a Sug. fr Sprinning  
S: 53° E. 158 P  
to a Sugar tr



In pursuance of an order No 3511 dated 17<sup>th</sup> June 1769, the  
is a draught of a  
above tract of land calla Bentheim containing 136.0.16 acres  
(obl.) the usual allowance of 6.p.c. for roads &c.

Situated on the West side Monongahela— survey'd for  
Jacob Decker 28<sup>th</sup> September 1769 by

James Hendricks

To  
John Lukens Fobl

IN TESTIMONY that the above is a copy of the original remaining on file in  
the Department of Internal Affairs of Pennsylvania, made  
conformably to an Act of Assembly approved the 16th day of  
February, 1833, I have hereunto set my Hand and caused  
the Seal of said Department to be affixed at Harrisburg,  
this twenty-eighth day of November 1906

*Isaac R. Brown*  
Secretary of Internal Affairs.